

Monthly Operations Report for October 2025 at KLUK

Operations

	Oct 2025	Oct 2024	Year over Year Change
TRANSITION	69	0	-
TOUCH & GO	250	0	-
TAKEOFF	572	0	-
LANDING	569	0	-
GO AROUND	65	0	-
FLYOVER	4	0	-
Totals	1771	0	-

NOTE: FLYOVER and TRANSITION are excluded from the total operations count. Operations classified as TOUCH & GO and GO AROUND are counted as two distinct operations, a landing and a takeoff respectively.

Aircraft Type

	Oct 2025	Oct 2024	Year over Year Change
Rotorcraft	15	0	-
Fixed wing single engine	1681	0	-
Fixed wing multi engine	65	0	-
Unknown	10	0	-

Engine Type

Turbo-shaft	2	0	-
Turbo-prop	48	0	-
Turbo-fan	9	0	-
Reciprocating	1558	0	-
4 Cycle	144	0	-
Unknown	10	0	-

Number of Engines

1	1694	0	-
2	67	0	-
Unknown	10	0	-

Average Daily Operations

Monday	33	0	-
Tuesday	38	0	-
Wednesday	38	0	-
Thursday	67	0	-
Friday	86	0	-
Saturday	82	0	-

Monthly Operations Report for October 2025 at KLU

Operations			
	Oct 2025	Oct 2024	Year over Year Change
Sunday	52	0	-
Average per weekday	52	0	-
Average per weekend	67	0	-
Local vs. Transient			
Local	0	0	0.0%
Transient	1771	0	0.0%
Nights Stayed	125	0	-
Seats on Overnight Aircraft	650	0	-
Overnight Visitors @ 50%	325	0	0.0%
Runways			
RWY 09 GO AROUNDs	58	0	-
RWY 09 LANDINGS	274	0	-
RWY 09 TAKEOFFs	256	0	-
RWY 09 TOUCH & GOs	270	0	-
RWY 09 Total	858	0	-
RWY 27 GO AROUNDs	72	0	-
RWY 27 LANDINGS	293	0	-
RWY 27 TAKEOFFs	313	0	-
RWY 27 TOUCH & GOs	216	0	-
RWY 27 Total	894	0	-

Monthly Operations Report for October 2025 at KLU

	Jan 2024	Jan 2023	Year over Year Change
Weight Class			
CLASS 1	1749	0	-
CLASS 2	12	0	-
Unknown	10	0	-
Jet Traffic			
Operations	3	0	-
Taking off Rwy 09	1	0	-
Landing Rwy 09	1	0	-
Taking off Rwy 27	1	0	-
Landing Rwy 27	0	0	-

Monthly Operations Report for October 2025 at KLUK			
	Jan 2024	Jan 2023	Year over Year Change
Largest aircraft	CESSNA 501 (B-I)		
Average seat count per jet	7.3	0	-

Most Active Aircraft				
Registration	Manufacturer	Model	Operations	Percentage of Total
N7843U	CESSNA	172F	466	77.0%
N7912U	CESSNA	172F	70	11.6%
N4524Q	GULFSTREAM AMERICAN CORP	AA-5B	42	6.9%
N8478U	CESSNA	172F	36	6.0%
N12651	CESSNA	172M	24	4.0%
N7525J	PIPER	PA-28R-180	22	3.6%
N119JT	SCHILDER JON	SONERAI II LS	22	3.6%
N230WA	CIRRUS DESIGN CORP	SR20	20	3.3%
N36304	PIPER	PA-28-181	20	3.3%
N7497T	CESSNA	172A	19	3.1%

Most Active Owners		
Name	Operations	City
HARKRADER AVIATION LLC	466	LOUISA
KELLEY AIRCRAFT LLC	87	WEYERS CAVE
SWEET BREEZE AVIATION LLC	70	GORDONSVILLE
RIG AVIATION LLC	36	TROY
RIGNEY TIMOTHY D	29	TROY
SCHILDER JON	22	WOODBIDGE
VALENTINE PETER	22	EFLAND
CAPITAL AVIATION II LLC	20	BETHESDA
MCCAY BRIAN D	20	EARLYSVILLE
WING NUTS FLING CLUB LTD	20	NORTH CHESTERFIELD

Owner Locations		
City	Operations	Percentage of total
LOUISA	388	64.1%
WEYERS CAVE	58	9.6%
TROY	56	9.3%
Unknown	53	8.8%
RICHMOND	50	8.3%

Aircraft Type

Unknown
Fixed wing multi engine
Fixed wing single engine
Rotorcraft



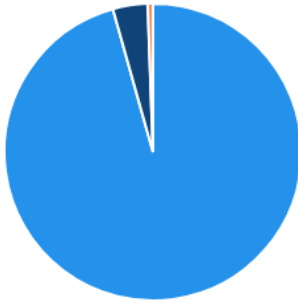
Engine Type

Unknown
4 Cycle
Reciprocating
Turbo-fan
Turbo-prop
Turbo-shaft



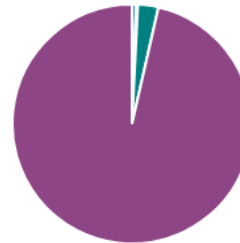
Number of Engines

1
2
Unknown



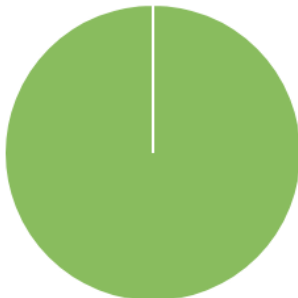
Weather

Unknown
IFR
LIFR
MVFR
VFR



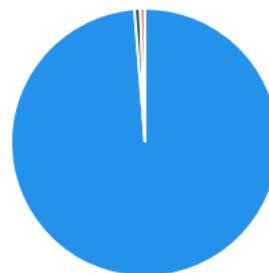
Local/Transient

Local
Transient

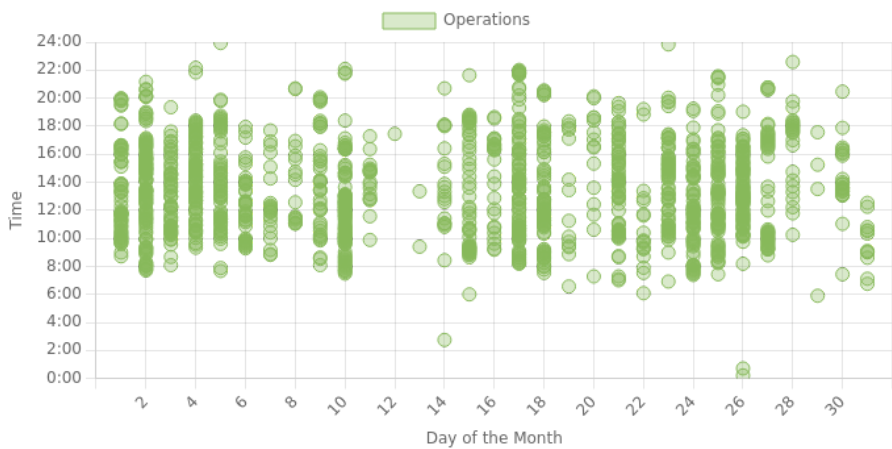


Weight Class

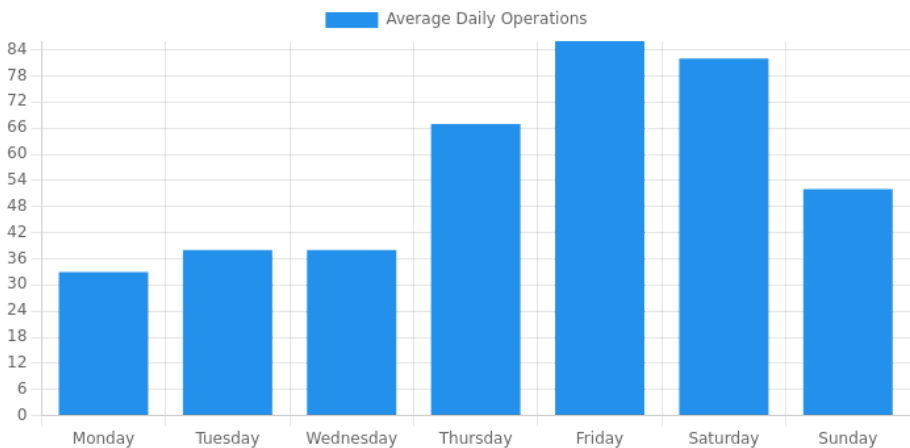
CLASS 1
CLASS 2
Unknown



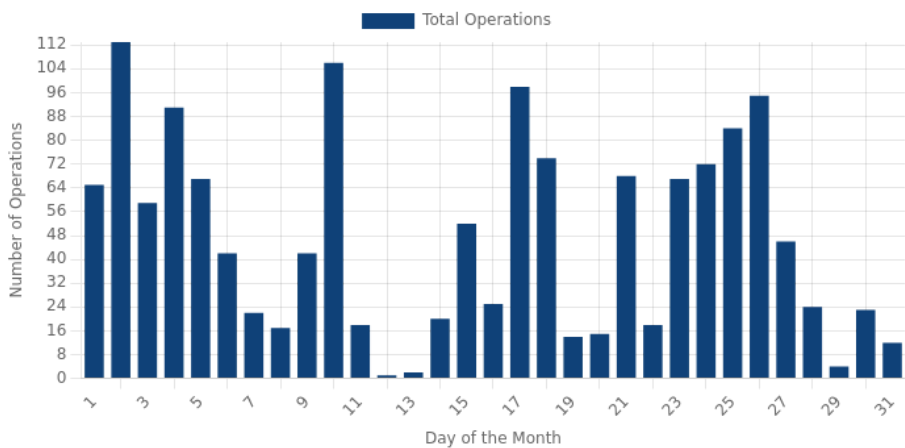
Time of Day



Day of the Week

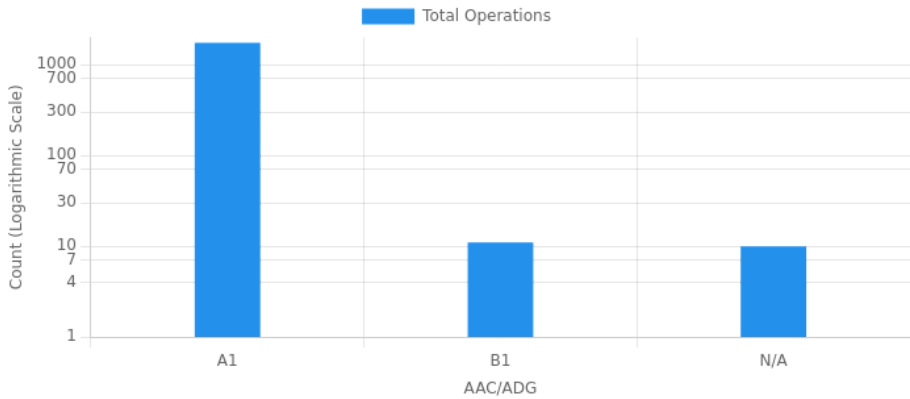


Daily Operations



Operations by AAC/ADG						
	I	II	III	IV	V	VI
A	1750	0	0	0	0	0
B	11	0	0	0	0	0
C	0	0	0	0	0	0
D	0	0	0	0	0	0
E	0	0	0	0	0	0

AAC/ADG Distribution



Report generated by RunwayStats.com on November 3, 2025, 9:33pm CST